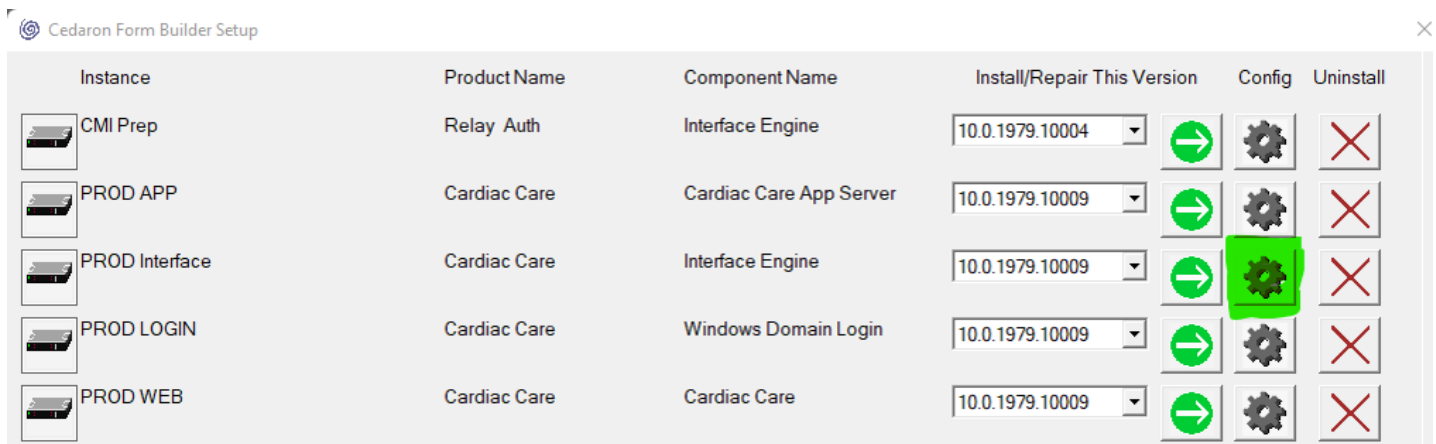
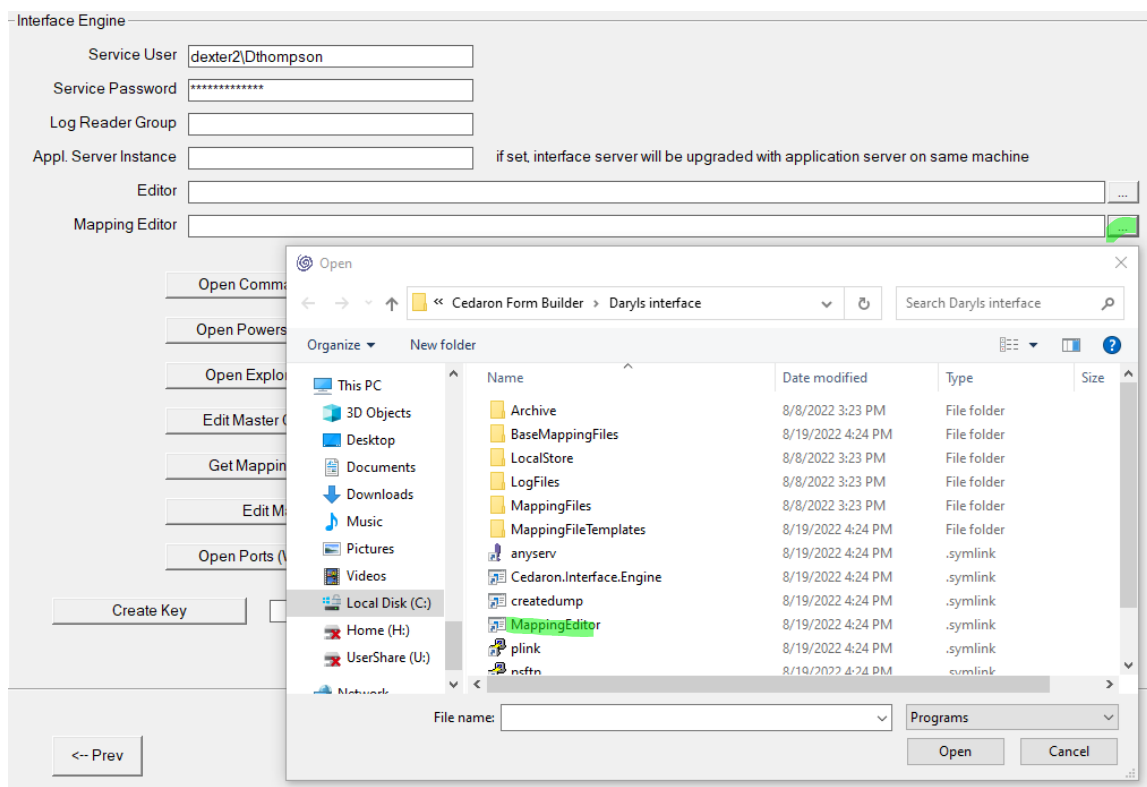


# How to open the Mapping File Editor

1. Launch X:\Program Files\Cedaron Form Builder\Shared\setupmgr.exe.
2. Click “Config” (gear icon) next to the PROD Interface (Interface Engine) option.

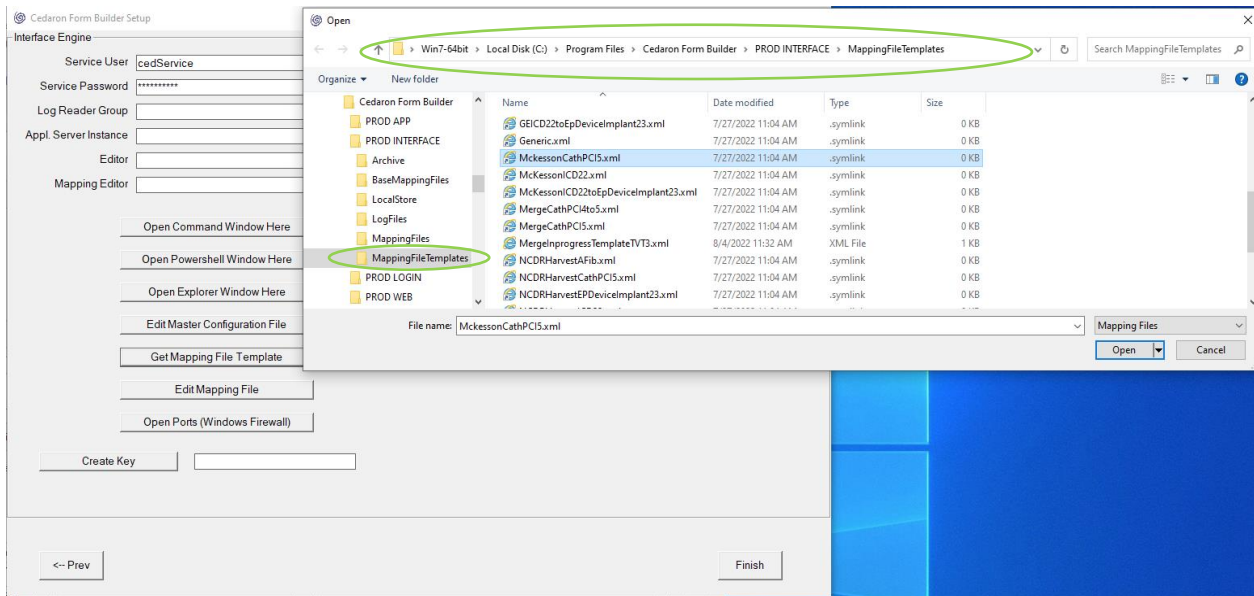


3. Click on the three dots next to Mapping Editor and select Mapping Editor. (You may need to select the Mapping Editor twice, although it is not necessary if the correct path is already showing).

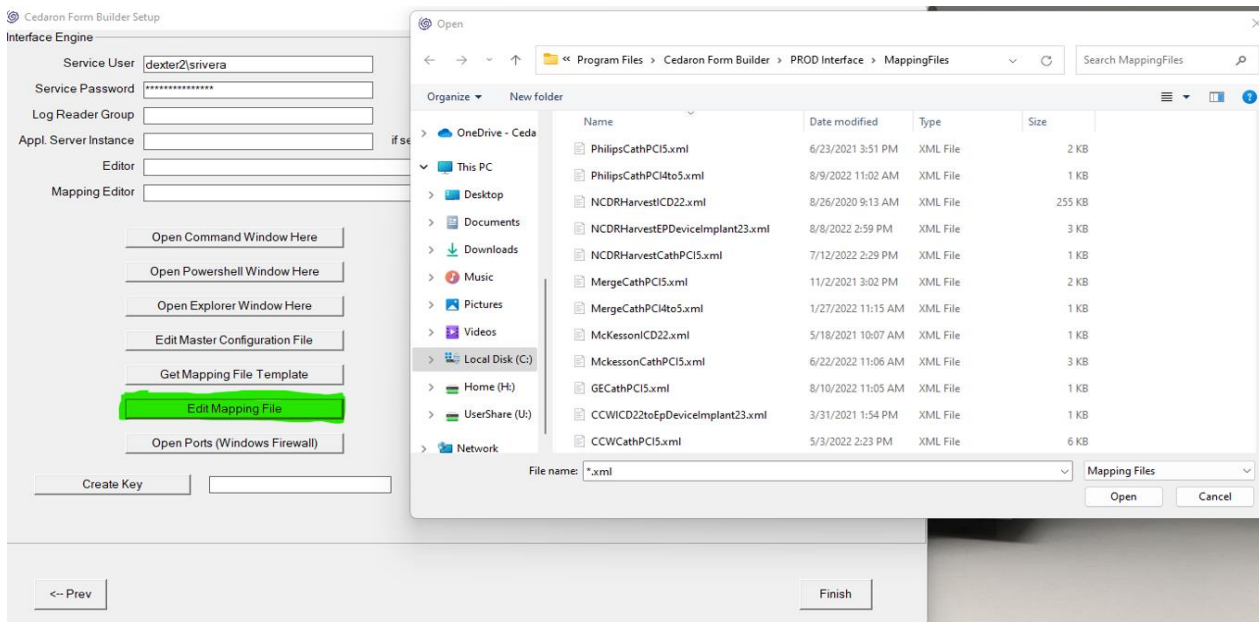


# How to open the Mapping File Editor Cont'd

4. **Get Mapping File Template** - The *MappingFileTemplates* folder that is installed with the interface instance has all the supported mapping files.



5. **Click "Edit Mapping File"**



6. You are now ready to use the Mapping File Editor.

Clinic Name

Family ID

Filter

Advanced Features

Edit as Text Open XML

Compare Files Export CSV

Groups Add New Group

Fields Add New Field

QID   Enabled

Value Mapping

Unmatched Behavior PassThrough

Default Value  Copy Paste

Input	Output
*	

Notes

Operation Codes Delete Add

Group Name

Delete Group Save Group

No QID  
Disabled  
Has Operation

Clone Field Save Field

7. Select a mapping file (your list may only have 1-2 options) from the windows explorer prompt.

**\*If you are still having trouble with opening the Mapping File Editor, please see Cedaron Support for more details. \***